

Breaking new ground



where technology works



**SANDIA SCIENCE &
TECHNOLOGY PARK**

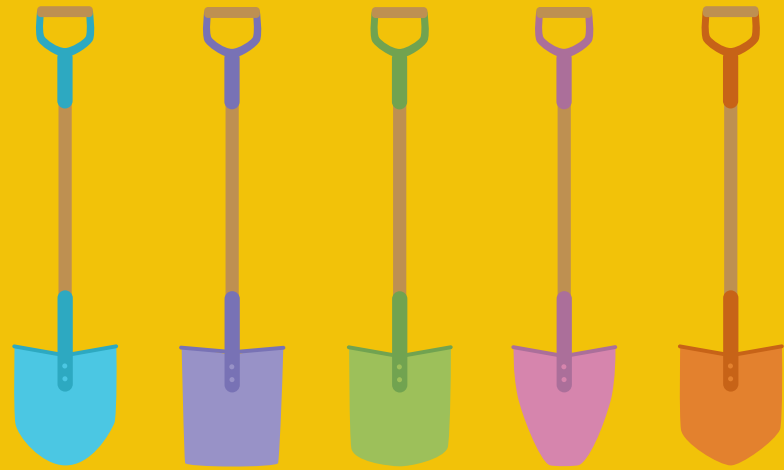
For more information contact:
Jackie Kerby Moore
Executive Director
10520 Research Road SE
Albuquerque, NM 87123
tel 505.845.8107
fax 505.844.1389
jkmoore@sstp.org
www.sstp.org

2005

where technology works



**SANDIA SCIENCE &
TECHNOLOGY PARK**



Breaking new ground

Breaking new ground



This has been a groundbreaking year for the Sandia Science & Technology Park. With five buildings under construction, growth is at record levels. And there's more to come.

Next year a 150,000-square-foot Sandia administration building will be built, and other new tenant construction is on the horizon.

Our Park is becoming the technology community we've been planning. As buildings are completed, increasing numbers of workers are moving into their new workplaces.

These are the people who are making the dream of an economically vital community a reality. They are creating the technologies and products that result in growth that reaches far beyond the Sandia Science & Technology Park — to our city, our state, and the country.

Sherman McCorkle, Chairman of the Board
Science and Technology Park Development Corporation

Jackie Kerby Moore, Executive Director
Sandia Science & Technology Park



Groundbreaking ceremonies symbolize the start of new construction

and help us share the thrilling anticipation of buildings rising.

But that's just about the steel and concrete, the wood and glass.

Even more exciting is the growing number of people who are

working here in the Park. It's their groundbreaking ideas that will

lead to advances in science and commerce that benefit us all.



Center for Integrated Nanotechnologies

Native American regional architecture is reflected in the large structure's curved façade featuring dry stack stone. The facility was designed to use the latest sustainable design concepts to provide a healthful, resource-efficient and productive working environment, and serve as a model facility for other DOE and governmental agencies. The Center for Integrated Nanotechnologies (CINT) will provide an interdisciplinary environment serving the government, university, and private sectors as they perform some of the world's most advanced research on applied nanotechnology.



Building Size 95,200 gross sq. ft., including 10,900 sq. ft. of class 100 clean room space.

150 people will work here.

Sandia Synergy Center

An extremely flexible multi-tenant building offering custom-configured office/light lab space, the Sandia Synergy Center leases facilities to small technology companies and Sandia departments needing as little as 1250 sq. ft. Tenants of any size can enjoy direct connections to the Park's fiber optic network, private entrances, and other amenities.



Building Size 28,650 sq. ft.

120 people will work here.



Bright colors and dynamic forms set this building apart. Its energy-efficient design includes a sophisticated shading device on the west façade. Poly-Flow is a manufacturer of cleaning equipment used in the semiconductor industry. Ktech purchased this company and is moving it to the SS&TP.



Building Size First phase 72,000 sq. ft., including 37,000 sq. ft. of manufacturing plus 35,000 sq. ft. of office space for Ktech and Poly-Flow, with the ability to expand an additional 23,000 sq. ft.

150 people will work here.

Poly-Flow Engineering



Team Specialty Products

This expansion will more than double the engineering design and new product development company's building square footage. The addition will match the design of the existing building and add more manufacturing, fabrication, and lab space for Team Specialty Products (TSP), allowing them to meet growing demand from their government and private sector customers. TSP designs, prototypes, and manufactures sophisticated electronic and mechanical devices for diverse applications.



Building Size 22,000 sq. ft. (being added to original 15,000-sq.-ft. building)

Currently TSP has 62 employees, and this new space will allow them to add additional employees as needed.

Computer Science Research Institute

Collaborative workspace and areas where people could gather spontaneously to share ideas were key requirements for this building where researchers from universities and the national laboratories will work together to solve problems in computer science, computational science, and mathematics. The facility was designed to accommodate permanent staff as well as transient researchers. It's being built by Avalon Investments and leased to Sandia National Laboratories for the Computer Science Research Institute (CSRI) to use.



Building Size 34,500 sq. ft.

185 people will work here.





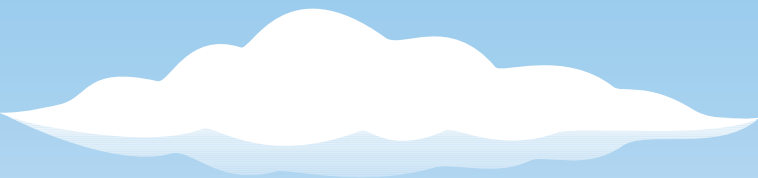
Park Metrics

Results This Year

Results since Park Founded in May 1998

Number of Companies	2	20
Number of Employees	69	1167
Funds-In and In-Kind Services from Tenants to Sandia <i>(i.e. CRADAs, Licensing Agreements)</i>	\$261,045	\$17,289,644
DOE/Sandia In-Kind Services to Tenants <i>(i.e. CRADAs)</i>	\$2,140	\$2,662,916
Contracts from Sandia Procurement to Tenants	\$37,339,043	\$113,553,958
Contracts between Tenants	\$1,131,257	\$4,282,665
Public and Private Investments in Park		
Public	\$276,000	\$20,568,590
Private	\$7,145,352	\$152,193,860
Total	\$7,421,352	\$172,762,450

Breaking new ground



Breaking new ground

Tenants

Analytical Solutions
Applied Technology Associates
Battelle
Control Metrics
CSA Engineering
EMCORE Fiber Optics
EMCORE PhotoVoltaics
Heel
Innovation Center
Ktech
La Luz Early Childhood Center
Materials Processing & Coatings Laboratory
Sandia International Programs Building
Sandia Laboratory Federal Credit Union
Sandia MESA TOP
Sandia MESA TOP II
Sandia Science & Technology Park Program Office
Sunwest CAD
TSP
Zia Laser

Partners

Technology Ventures Corporation
Sandia National Laboratories
City of Albuquerque
Albuquerque Public Schools
BUILD New Mexico/Union
Development Corporation
New Mexico State Land Office
Lockheed Martin Corporation
Economic Development Administration
Department of Energy
State of New Mexico
Public Service Company of New Mexico
Mid-Region Council of Governments
Bernalillo County
New Mexico Congressional Delegation

Staff

The staff at the Park Program Office offers tenants an array of business development, marketing, and support services which can facilitate business opportunities and partnerships between tenants and with Sandia.

Jackie Kerby Moore
Executive Director

Jim Clinch
Program Leader

Carl Becker
Project Engineer

Diane Grant
Office Management Assistant

Science and Technology Park Development Corporation Board of Directors

Chairman Sherman McCorkle
Technology Ventures Corporation

Larry Adcock
U.S. Department of Energy/NNSA

Loretta Armenta
Qwest

Sandra Begay-Campbell
University of New Mexico Board of Regents

Terri Cole
Greater Albuquerque Chamber of Commerce

Jesse Dompree
State Farm Insurance Company

Bruce Donisthorpe
BWD Global

Edward Lujan
Manuel Lujan Insurance

Leo Marquez
U.S. Air Force (Retired Lieutenant General)

Fred Mondragon
City of Albuquerque

Stuart Purviance
Kirtland Partnership Committee

Lawrence Rael
Mid-Region Council of Governments

Al Romig
Sandia National Laboratories

Michael Skaggs
NextGen

Gary Tonjes
Albuquerque Economic Development

Honorary Board Members

Senator Pete Domenici
U.S. Senate

Senator Jeff Bingaman
U.S. Senate

Representative Heather Wilson
U.S. House of Representatives

STPDC Officers

Sherman McCorkle, President
Technology Ventures Corporation

Jackie Kerby Moore, Vice President
Sandia Science & Technology Park

Randy Wilson, Secretary/Treasurer
Technology Ventures Corporation

Community Advisory Council

Lisa Breeden
Office of U.S. Senator Pete Domenici

Randy Burge
proActive.tools

Bob Carter
Office of U.S. Representative Stevan Pearce

Sarah Cobb
Office of U.S. Representative Tom Udall

Tina Cummins
Albuquerque City Council

Julie Dreike
Office of U.S. Representative Heather Wilson

Deirdre Firth
City of Albuquerque

David Goldheim
Sandia National Laboratories

Don Goodwin
Albuquerque Technical Vocational Institute

Arthur Guenther
University of New Mexico

Daniel Gutierrez
Bernalillo County

Jill Halverson
Office of U.S. Senator Jeff Bingaman

Jerry Hanks
Office of Lieutenant Governor Diane Denish

Ted Hobbs
NM House of Representatives

Sul Kasscieh
University of New Mexico

Carolyn Monroe
LandAmerica Albuquerque Title

Carol Radosevich
Public Service Company of NM

Bob Sachs
TSP

Mike Stanford
First State Bank

Anthony Tenorio
Applied Technology Associates

Jim Trump
BUILD New Mexico

Joel Voisine
Willow Wood Neighborhood Association